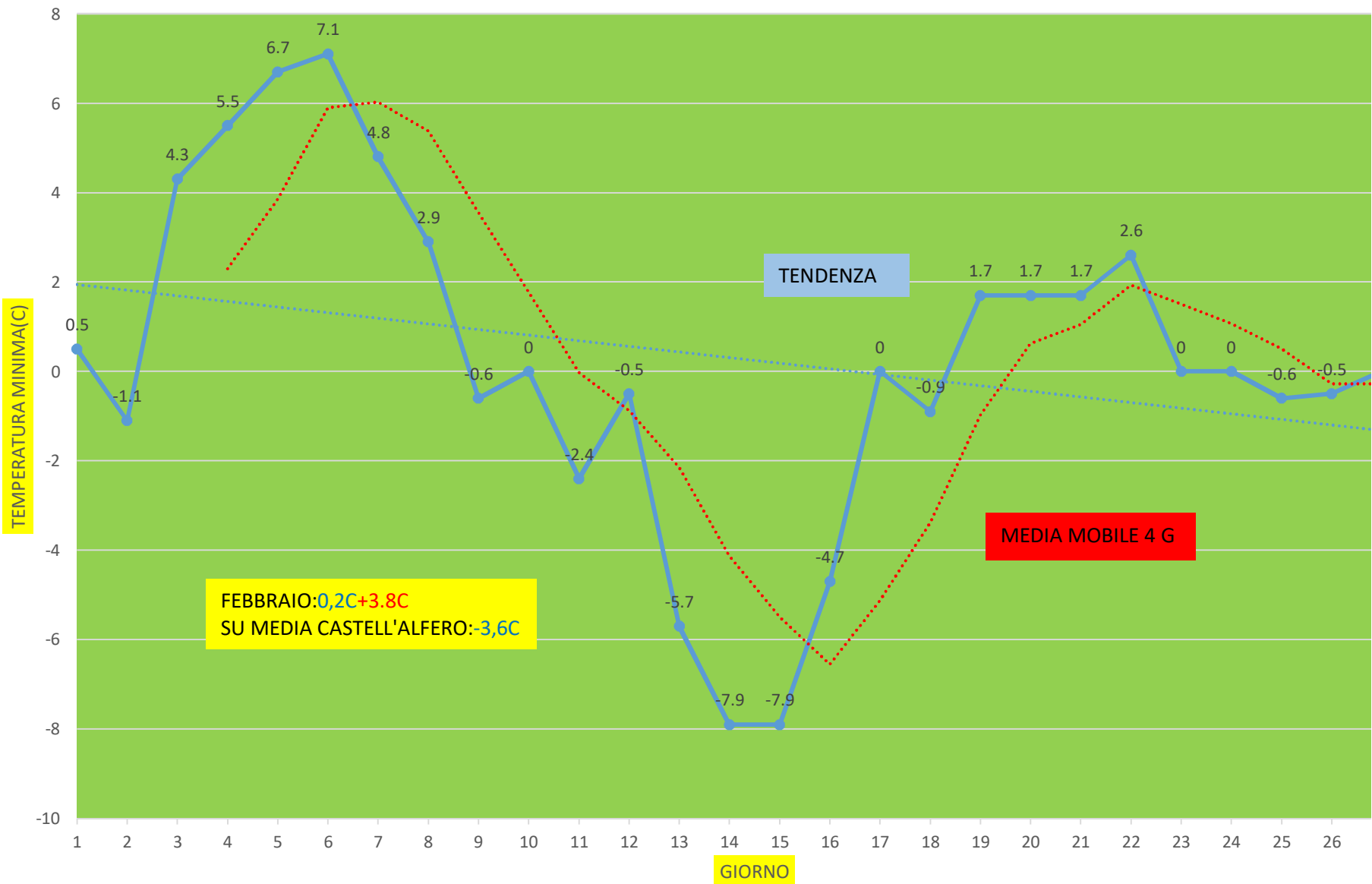
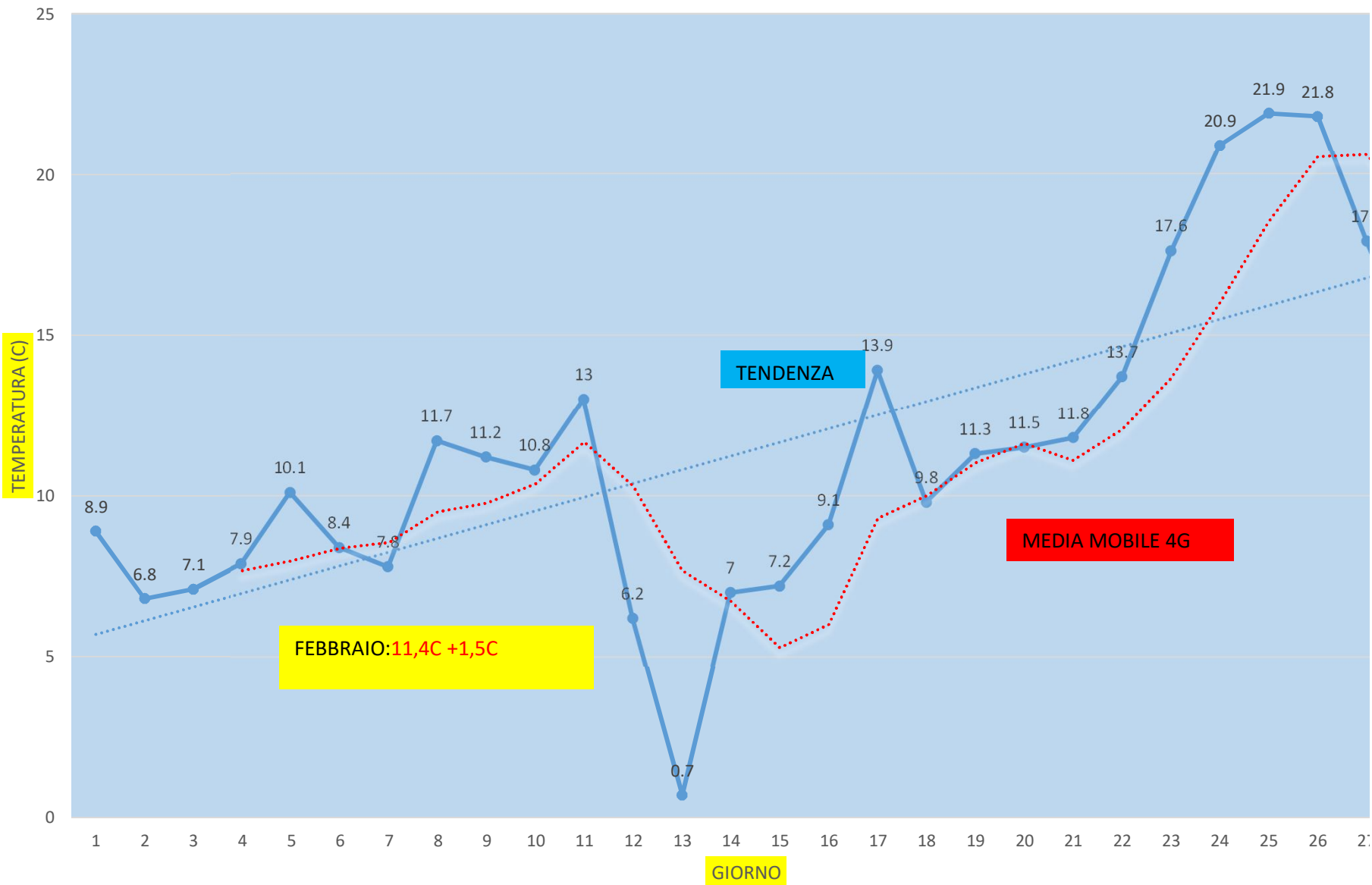


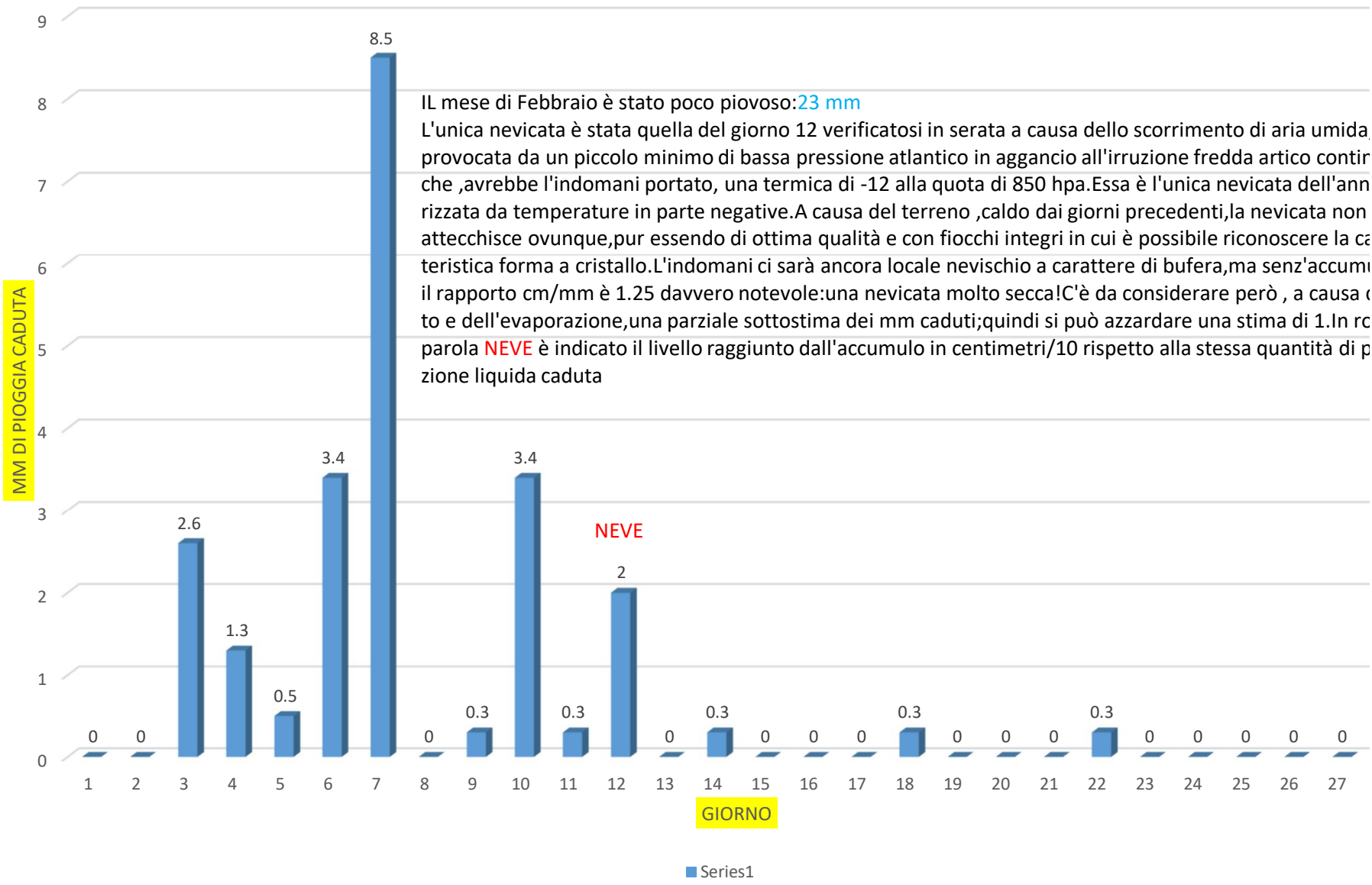
# MINIME FEBBRAIO



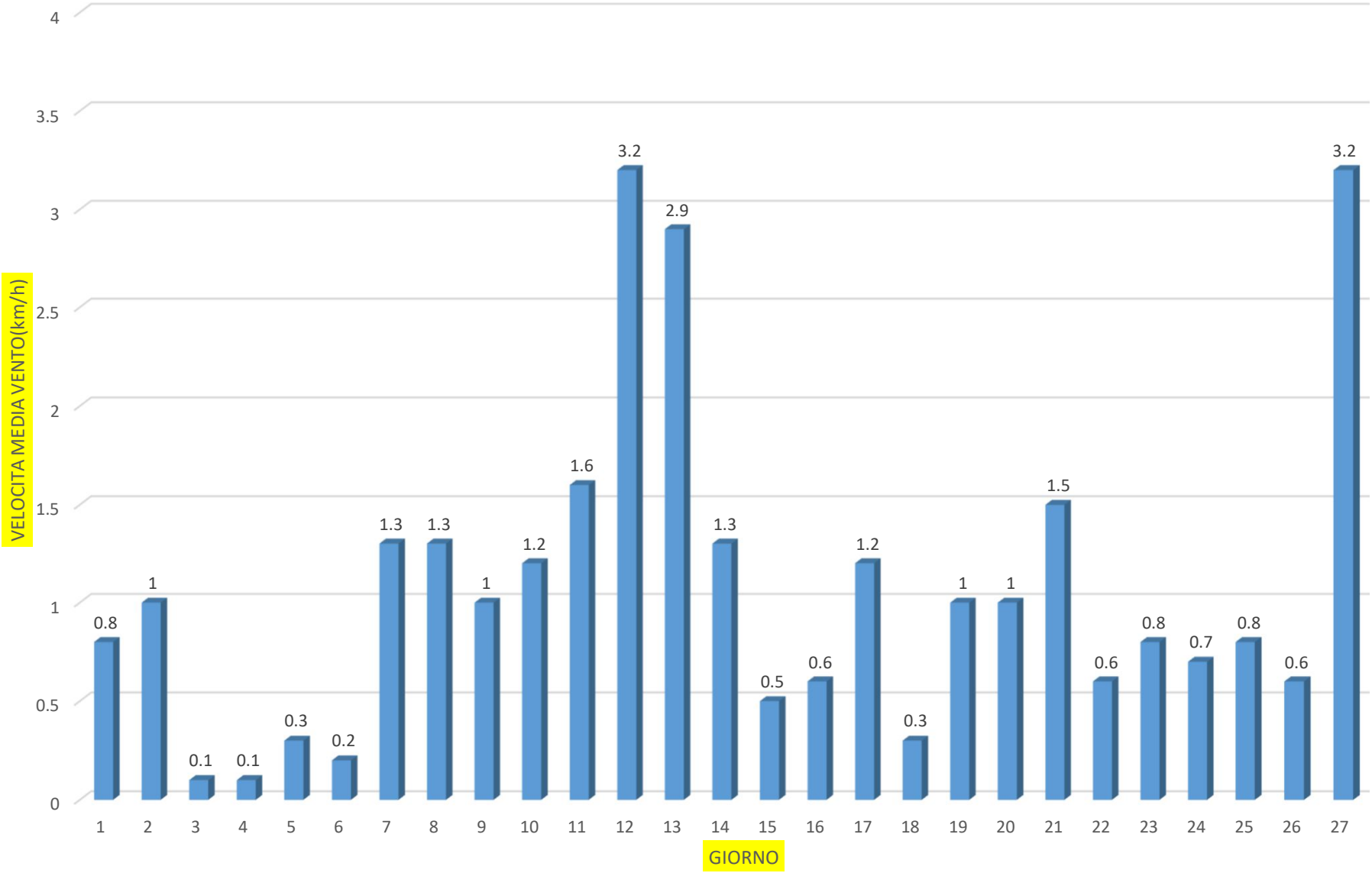
**MASSIME FEBBRAIO**



## PIOGGIA E NEVE

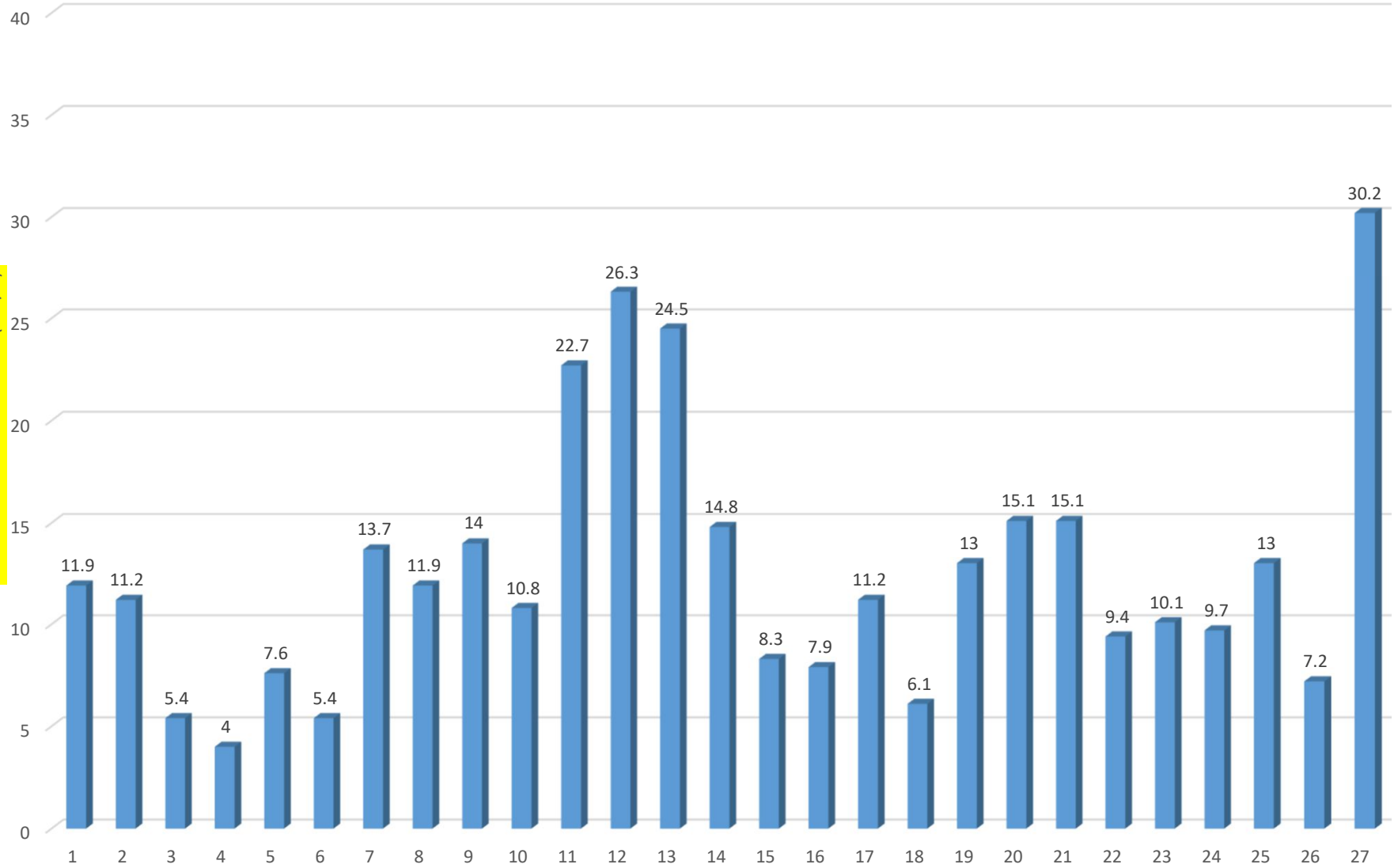


# VENTO MEDIO OGNI GIORNO



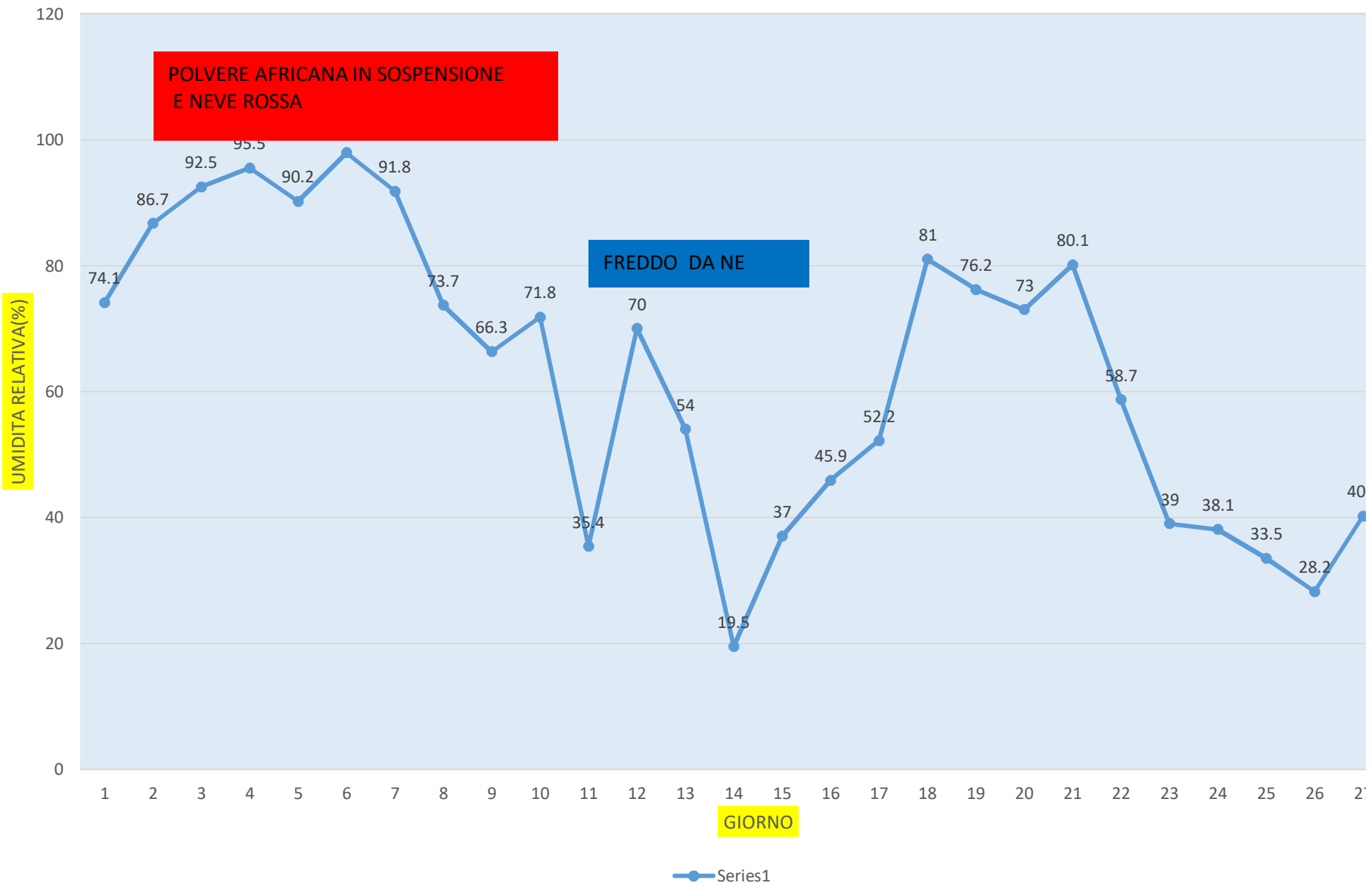
# RAFFICA MASSIMA

VELOCITA MASSIMA VENTO (KM/H)

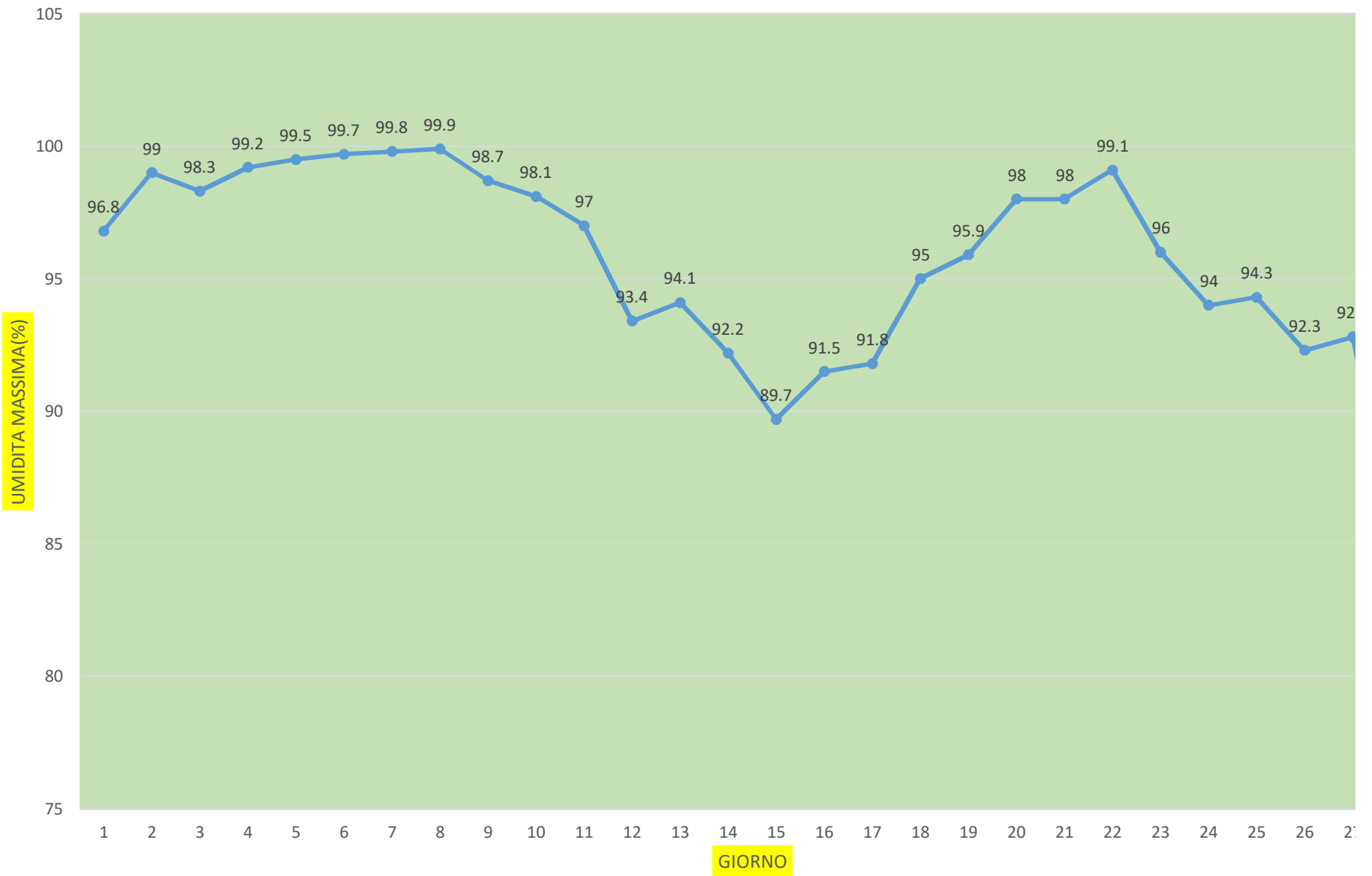


GIORNO

# UMIDITA MINIMA GIORNALIERA



# UMIDITA MASSIMA GIORNALIERA



## STAZIONE METEO MOBILE ALERTS VILAFRANCA D'ASTI PIANA 175MT

## DATI FEBBRAIO 2021

| giorno | minima C | massima C | pioggia mm | vento medio(km/h) | raf max (km/h) | um min(%) |
|--------|----------|-----------|------------|-------------------|----------------|-----------|
| 1      | 0.5      | 8.9       | 0          | 0.8               | 11.9           | 74.1      |
| 2      | -1.1     | 6.8       | 0          | 1                 | 11.2           | 86.7      |
| 3      | 4.3      | 7.1       | 2.6        | 0.1               | 5.4            | 92.5      |
| 4      | 5.5      | 7.9       | 1.3        | 0.1               | 4              | 95.5      |
| 5      | 6.7      | 10.1      | 0.5        | 0.3               | 7.6            | 90.2      |
| 6      | 7.1      | 8.4       | 3.4        | 0.2               | 5.4            | 97.9      |
| 7      | 4.8      | 7.8       | 8.5        | 1.3               | 13.7           | 91.8      |
| 8      | 2.9      | 11.7      | 0          | 1.3               | 11.9           | 73.7      |
| 9      | -0.6     | 11.2      | 0.3        | 1                 | 14             | 66.3      |
| 10     | 0        | 10.8      | 3.4        | 1.2               | 10.8           | 71.8      |
| 11     | -2.4     | 13        | 0.3        | 1.6               | 22.7           | 35.4      |
| 12     | -0.5     | 6.2       | 2          | 3.2               | 26.3           | 70        |
| 13     | -5.7     | 0.7       | 0          | 2.9               | 24.5           | 54        |
| 14     | -7.9     | 7         | 0.3        | 1.3               | 14.8           | 19.5      |
| 15     | -7.9     | 7.2       | 0          | 0.5               | 8.3            | 37        |
| 16     | -4.7     | 9.1       | 0          | 0.6               | 7.9            | 45.9      |
| 17     | 0        | 13.9      | 0          | 1.2               | 11.2           | 52.2      |
| 18     | -0.9     | 9.8       | 0.3        | 0.3               | 6.1            | 81        |
| 19     | 1.7      | 11.3      | 0          | 1                 | 13             | 76.2      |
| 20     | 1.7      | 11.5      | 0          | 1                 | 15.1           | 73        |
| 21     | 1.7      | 11.8      | 0          | 1.5               | 15.1           | 80.1      |
| 22     | 2.6      | 13.7      | 0.3        | 0.6               | 9.4            | 58.7      |
| 23     | 0        | 17.6      | 0          | 0.8               | 10.1           | 39        |
| 24     | 0        | 20.9      | 0          | 0.7               | 9.7            | 38.1      |
| 25     | -0.6     | 21.9      | 0          | 0.8               | 13             | 33.5      |
| 26     | -0.5     | 21.8      | 0          | 0.6               | 7.2            | 28.2      |
| 27     | 0        | 17.9      | 0          | 3.2               | 30.2           | 40.2      |
| 28     | 0.2      | 14.3      | 0          | 3.6               | 38.5           | 37.2      |





um max (%)

96.8

99

98.3

99.2

99.5

99.7

99.8

99.9

98.7

98.1

97

93.4

94.1

92.2

89.7

91.5

91.8

95

95.9

98

98

99.1

96

94

94.3

92.3

92.8

84.3

media minime©    media massime©    media min max©

0.246428571    11.43928571    5.83

vento medio(km/h)    umidita rel max    minima mensile

1.167857143    99.90%    -7.9

giorni di gelo    giorni con max>=15    giorni con max<=10

16    5    12

giorni di gelo di seguito    pioggia totale mm    pioggia max giornaliera mm

10    23.2    8.5

um max media(%)

95.65714286

medie reali

TEMPERATURA©

UMIDITA RELATIVA(%)

VENTO MEDIO(KM/H)

RAFFICA (KM/H)

NEVICATE INVERNO

01-02/12/2020

4-Dec

28-Dec

1-Jan

2-Jan

22-Jan

MEDIA REALE TEMPERATURA

3.3 SU C:A:

castell'alfero

|                           |                           |                 |
|---------------------------|---------------------------|-----------------|
| neve:2.5cm                | accumulo tot inverno(cm): | umidità rel min |
| giorno 12                 | 27.4                      | 19.50%          |
| massima mensile           | giorni di pioggia         | minima maggiore |
| 21.9                      | 6                         | 7.1             |
| giorni con max<=5         | giorni con min<= -5       | massima minore  |
| 1                         | 3                         | 0.7             |
| raffica max mensile(km/h) | raffica max media(km/h)   | um min media(%) |
| 38.5                      | 13.53571429               | 62.13214286     |

|       | INVERNO 2020-2021 | CASTELL'ALFERO<br>SCARTO MEDIA 91-20 |
|-------|-------------------|--------------------------------------|
|       | 5.5               | 2.9                                  |
|       | 83.2              | 88.2                                 |
|       | 1.2               | 0.8                                  |
|       | 3.6               | 2.8                                  |
|       | 6                 |                                      |
|       | RAPPORTO CM/MM    |                                      |
| 6.3cm |                   | 0.4                                  |
| 6.2cm | 0.5*              |                                      |
| 4.9cm | 1*                |                                      |
| 1cm   |                   | 0.16                                 |
| 4.5cm | 0.3*              |                                      |
| 2cm   | 0.4*              |                                      |
|       | MEDIA 0.46 CM/MM  |                                      |

\*=stima causa assenza riscaldatore